

Hylton Center

David Baylor
General Manager
dbaylor@gmu.edu
703.993.9504

Adrienne Bryant Godwin
Director of Programming
agodwin2@gmu.edu
703.993.4337

Diane Burrell
Operations Manager
dburrell5@gmu.edu
703.993.7742

Physical address:
10960 George Mason Circle
Manassas, VA 20110
703.993.1234

Chris Burrell
Production & Facilities Manager
cburrell2@gmu.edu
703.993.7740

For Rental Information:
Emily Smith
Office Manager
esmith68@gmu.edu
703.993.1234



Contents

Hylton Center 1

Contacts 2

Merchant Hall 3

Gregory Family Theater 13

Didlake Grand Foyer 18

UVA Health Systems Rehearsal Room 19

Buchanan Partners Art Gallery..... 20

Jacquemin Family Foundation Hall 21

Ballard Postma Studio..... 22

Classrooms 1 & 2..... 23

Practice Rooms..... 24

Hylton Supplemental Equipment..... 25

Directions to Hylton Performing Arts Center..... 26

Hylton Space Quick Reference 27

Contacts

Executive Director

Rick Davis
rdavi4@gmu.edu
703.993.9657

General Manager

David Baylor
dbaylor@gmu.edu
703.993.9504

**Production & Facilities
Manager**

Chris Burrell
cburrel2@gmu.edu
703.993.7740

Operations Manager

Diane Burrell
dburrel5@gmu.edu
703.993.7742

Technical Director

Kevin Smith
ksmit6@gmu.edu
703.993.7743

Head Electrician

Stephen Winkler
wstephe3@gmu.edu
703.993.7980

Audio Engineer

Zach Duane
zduane@gmu.edu
703.993.7156

Video and Audio Head

Mark Ormesher
mormeshe@gmu.edu
703.993.7117

**Front of House &
Community Inclusion
Manager**

Victoria Unterberger
vunterbe@gmu.edu
703.993.7154

Box Office Manager

Box Office
hylton@gmu.edu
703.993.7759

Education Coordinator

Marit Majeske
mmajeske@gmu.edu
703.993.7741

Office Manager

Emily Smith
esmith68@gmu.edu
703.993.1234

Merchant Hall



TECHNICAL SPECIFICATIONS

The 1100 seat concert hall is designed as an adaptable venue, able to serve many types of events. 484 orchestra level seats, 50 pit seats, 186 seats in the Parterre, 190 seats in the first balcony and 190 seats in the second balcony. Seating charts available for download online.

Merchant Hall comes equipped with state of the art lighting and sound systems, a large orchestra pit, and the ability to vary the acoustical character of the room for the needs of a given production.

An adjustable music shell may be deployed to enhance the acoustical presence of an orchestra, chorus, soloist, or chamber ensemble. For theatrical, dance, and other large-scale productions, the shell vanishes, opening up a large stage with ample wing space and a 75 line set single purchase counterweight fly system.

AUDITORIUM SEATING

Maximum Capacity:

Total	1100
Orchestra	484
Orchestra Pit	50
Parterre	186
1 st Balcony	190
2 nd Balcony	190

STAGE SEATING

Maximum Capacity:

Seated Banquet	400
Standing Reception	600
Hollow Square	50
Classroom Style	200



Merchant Hall Dimensions

STAGE AND ORCHESTRA PIT

Stage:

Proscenium:	49'-9"W x 32'-10"H
Apron:	2'-2"
Upstage Wall:	45'-0"
Floor Construction:	Black, Yellow Pine (T&G) on plywood, on rubber pads on 2"x4" sleepers
Dance Floor:	Harlequin Studio, black, 10 panels 58'x49'
Hard Opening:	49'-9"W x 32'-10"H (at center)
Proscenium line to back wall (depth):	45'-0"
Back wall to upstage crossover:	3'-0"
Proscenium to apron edge:	2'-2"
Proscenium arch to stage left wall:	26'-9"
Proscenium arch to stage right wall:	23'-7"
Grid Height:	70'-0"
Pipe Travel:	65'-3"

Orchestra Pit:	48'-6"W x 12'-7" Deep at stage extension 1,650sf total at orchestra pit level 12'-0" below deck
----------------	---

Other Dimensions:

Centerline to Stage Wall Left:	52'-5"
Centerline to Stage Wall Right:	48'-4"
Wing Space Stage Left:	26'-0"
Wing Space Stage Right:	23'-0"
Orchestra Shell Depth:	45'-5"
Orchestra Shell Width Downstage:	49'-9"
Orchestra Shell Width Midstage:	43'-0"
Orchestra Shell Width Upstage:	41'-0"

Backstage Support

Wardrobe room available by advance arrangement only with washer and dryer, 2 irons, 3 ironing boards, 2 professional steamers and a deep sink.

Green room has refrigerator, sink, and microwave

Green Room and all Dressing Rooms have 42" LCD for audio and video feed from the stage.

Theater Dressing Rooms

Star dressing rooms have sinks, toilets, and showers Chorus dressing rooms share common facilities

1-3 Person:	(2) Star rooms at stage level
6-8 Person:	(4) Chorus rooms at stage level
12-16 Person:	(2) Chorus rooms at stage level

Rigging System

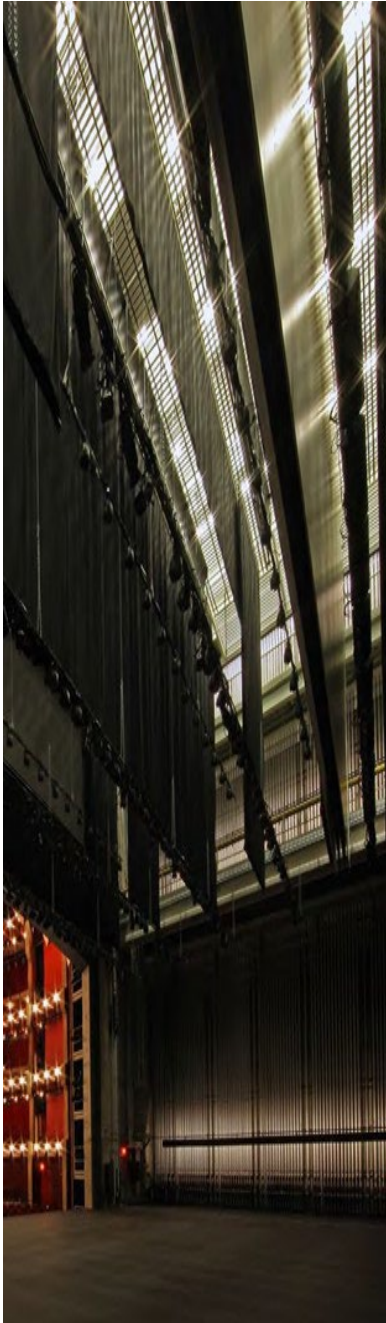
Main Curtain:	Counterweight – Guillotine only
Type/Speed:	Manual
Line Sets:	75 single purchase counterweight
Capacity:	1,800 pounds
Batten Lengths:	66'-0"
Batten Travel:	3'-6" Low Trim to 69'-0" High Trim
Grid Access:	Fully walkable with access via stairs or ladder

Drapery Inventory

Quantity	Item	Color	Fabric	Dimensions	Notes
16	Legs	Black	Velour	12' 2" W x 34' H	Flat
5	Borders	Black	Velour	66' W x 12' H	Flat
1	Scrim	White		66' W x 34' H	Flat
1	Scrim	Black		66' W x 34' H	Flat
1	Trans	Cool	Plastic	66' W x 34' H	Flat
1	Act Curtain	Red	Velour	66' W x 34' H	Fullness
4	Blackout	Black	Velour	66' W x 34' H	Flat
1	Bounce	White	Plastic	66' W x 34' H	Flat



Line Set Schedule



Line Set	Distance		Use	Trim
1	1'-9"		-----	
2	2'-3"		Full Stage Black/Blackout	
3	2'-9"		Legs	44' Opening
4	3'-3"		-----	
5	3'-9"		1A Electric	
6	4'-3"		-----	
7	5'-3"	CANNOT MOVE	Shell Ceiling	
8	6'-3"	CANNOT MOVE	1st Electric	26'H trim
9	6'-9"		-----	
10	7'-3"		-----	
11	7'-9"		-----	
12	8'-3"		Moving LX 1	
13	8'-9"		-----	
14	9'-3"		-----	
15	9'-9"	CANNOT MOVE	Shell Electric	
16	10'-3"		Border	
17	10'-9"		Legs	
18	11'-3"		AV Masking Legs Alternate	
19	11'-9"		AV Screen Alternate	
20	12'-3"		-----	
21	12'-9"		-----	
22	13'-9"	CANNOT MOVE	Shell Ceiling	
23	14'-9"		-----	
24	15'-3"		2nd Electric	26' H trim
25	15'-9"		-----	
26	16'-3"		-----	
27	16'-9"		-----	
28	17'-3"		Moving LX 2	
29	17'-9"		-----	
30	18'-3"	CANNOT MOVE	Shell Electric	
31	18'-9"		-----	
32	19'-3"		Mid-Stage FSB	
33	19'-9"		Legs	
34	20'-3"		AV Masking Legs	22' opening
35	20'-9"		AV Screen	
36	21'-3"	CANNOT MOVE	Mid-Stage Red	
37	22'-3"	CANNOT MOVE	Shell Ceiling	
38	23'-3"		-----	
39	23'-9"		3rd Electric	26'H Trim
40	24'-3"		-----	
41	24'-9"		-----	
42	25'-3"		Moving LX 3	
43	25'-9"		-----	
44	26'-3"		hanging mics	
45	26'-9"	CANNOT MOVE	Shell Electric	
46	27'-3"		Border/ FS B	
47	27'-9"		Legs	
48	28'-3"		-----	
49	28'-9"		-----	
50	29'-3"		-----	
51	29'-9"		-----	
52	30'-9"	CANNOT MOVE	Shell Ceiling	
53	31'-9"		-----	
54	32'-3"		-----	
55	32'-9"		4th Electric	26'H Trim
56	33'-3"		-----	
57	33'-9"		Moving LX 4	
58	34'-3"		-----	
59	34'-9"		-----	
60	35'-3"	CANNOT MOVE	Shell Electric	
61	35'-9"		Border / FSB	
62	36'-3"		Legs	
63	36'-9"		-----	
64	37'-3"		Trans	
65	37'-9"		-----	
66	38'-3"		Cyc Electric	
67	39'-3"	CANNOT MOVE	Shell Ceiling	
68	40'-3"		-----	
69	40'-9"		Legs	
70	41'-3"		-----	
71	41'-9"		-----	
72	42'-3"		-----	
73	42'-9"		Bounce	

ELECTRICAL AND ELECTRICS

Switches: 400A and 125A company switches are 3-phase and include FM Cam-lok's with double neutrals or tail connection lugs, breakers. Grounds and neutrals are reversed.

Theater: 1 USL - 400A, 120/208VAC

1 USR, 1 USL - 100A, 120/208VAC

House Theatrical Lighting, Dimming, And Control



Dimming: (430) 20A dimmers

Control: ETC ION Classic

FOH: ETC Puck for back up

Tech Table: ETC Designer Puck

Lighting Positions

2 Antitorm positions SL & SR at proscenium

2 center balcony rails

SL & SR balcony rails at top of balcony 1 and 2

5 Onstage Electrics

Tech Rail

Stage Electrical Circuit Schedule

Location	2.4KW Circuits
Technical Catwalk	259-282,433-444
Balcony 2	295-300, 319-324, 331-342
Balcony 1	301-306, 325-330, 343-354
Torm SL	283-294
Torm SR	307-318
Mid Rail SL	1-216, 403-414
Mid Rail SR	223-234, 415-426, 445-456
Stage Deck	355-402
Pit	427-432



Lighting Inventory



ETC Ion Classic

Instruments

Source 4 PAR	96
10°	20
14°	10
19°	42
26°	46
36°	70
50°	24
70°	2
6" Fresnels	14
8' PAR 56 Strips	9
6' L&E Mini Strips	8
4 Cell L&E Broad Cycs	2
PAR 64	42

Booms

10' Rolling Booms (box construction)	10
5 units/boom	

Accessories

City Theatrical Drop-In Iris	10
Source Four Top Hat	72
Source Four Half Hat	24
Source Four PAR Barn Door	100
A-size Pattern Holder	100
Zetex Heat Guard	24"H x 12' L
	Black Grommet 5
TBE 18' Boom Pipe	12
City Theatrical Boom Tie-off	12
Altman 50-lb. Base	12

Equipment is shared across multiple spaces. All items are subject to availability and use must be discussed with Production Team prior to Load in. Additional charges apply on some equipment.

SOUND

Equipment is shared across multiple spaces. All items are subject to availability and use must be discussed with Production Team prior to Load in. Additional charges apply on some equipment and for piano tunings.



PA System

D&B Q1 in Left/Right Line Array	20
D&B Q10 in Left/Right Fill Positions	2
D&B B2 Subwoofers	2

Monitor Loud Speakers

CMM M12 Community Passive Stage Monitors	8
EV Sx300 Passive Stage Monitors	4
JBL Eon 515 Active Stage Monitors	6

Console and Outboard Equipment

Avid S6L	1
Denon CD/MP3 Players	2
Marantz PMD-570 Solid State Recorder	1
iRack MP3 Input Systems	1

Mixer & Microphones

Peavy 14 Channel with Shure ULXS	1
Wireless Mics (Lavalier and Hand Held)	
Shure ULX D Wireless Microphone (Lavalier and Hand Held)	4
Portable Shure ULX D Wireless Microphone (Lavalier and Hand Held)	8
Shure Beta 58A	12
Shure SM 58	4
Shure SM57	6
Shure Beta 87C	4
Shure SM81	2
Shure Beta 52A	1
Shure KSM44	2
AKG 451B	4
AKG 214	4
AKG 414	2
Sennheiser MD421-11	2
Sennheiser e604	3

Amplifiers

D&B D12 Amplifiers for PA System	7
Crown Com-Tech 1200 (To drive 8 Monitor Mixes)	4

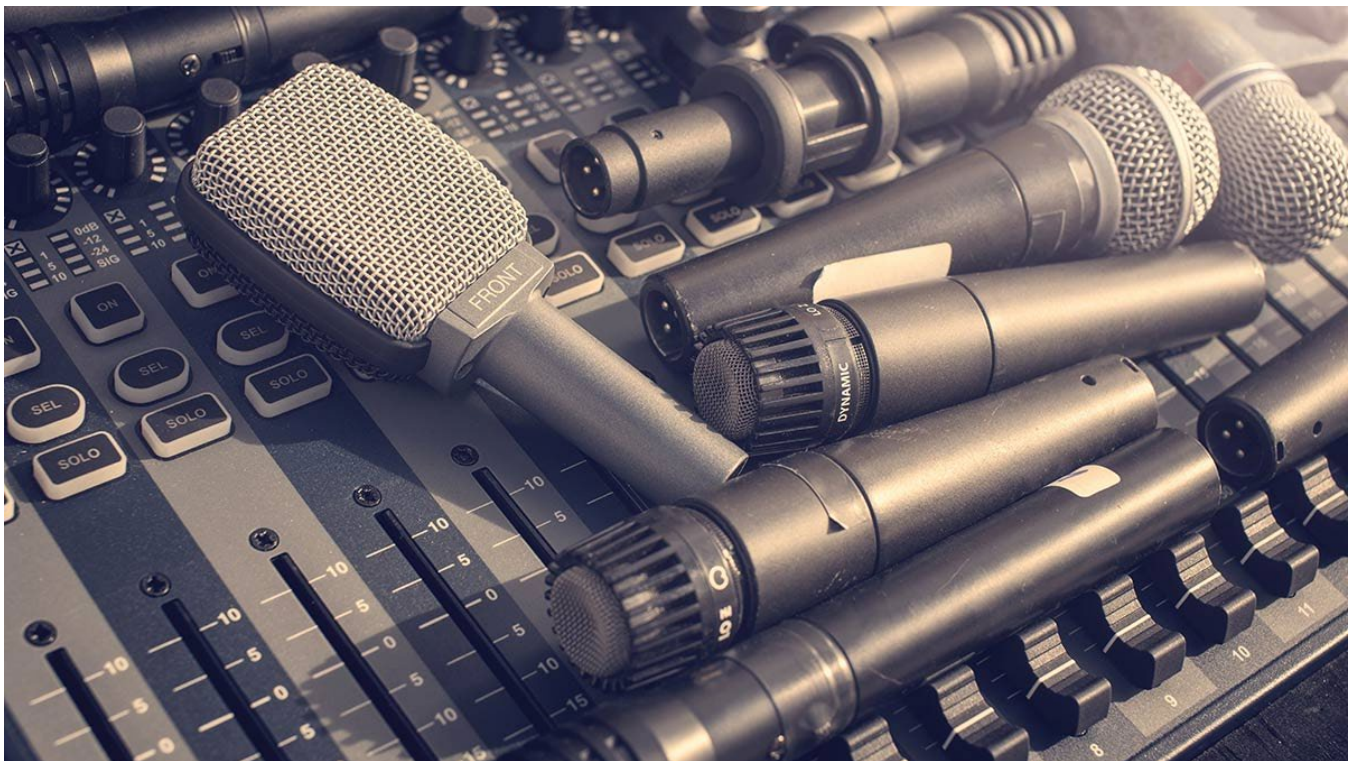
Intercom

ClearCom 4-channel Main Station	1
CLR CC-95 ClearCom Professional Single Ear Headset	14
TEL PH-88 Telex Single Muff Headset	6
CLR CC-260 ClearCom Dual Muff Headset	4
CLR CC-95 ClearCom Professional Single Ear Headset	5



Microphone Stands

SND MS-12CD Atlas Sound FLOOR LOW-PRO STAND	10
Round base mic stands	4
SND TEB-E Atlas Sound TRP MS 37-66 IN BM EXT	16
Tripod mic stands	24
SND PB-21XE Atlas Sound Mic Stand Boom Arm	8
BS S AR-133 BS S Active Direct Box	4



SUPPLEMENTAL EQUIPMENT

Equipment is shared across multiple spaces. All items are subject to availability and use must be discussed with Production Team prior to Load in. Additional charges apply on some equipment and for piano tunings.

Livestreaming/Recording Video Equipment



BMD ATEM Television Mixer	1
BMD HyperDeck - SSD Recorder	1
TeraDeck Streaming Video Encoder	1
Panasonic AW-UE150 PTZ Camera	1
Panasonic AW-UE60 PTZ Camera	1
Panasonic PTZ Remote Controller	1
Sony FS5 M2 camera, with 18-105mm lens and tripod	2

Video Distribution

DGP 108-659 DGP Lighting 30-1080P Projector	1
DGP 105-610 Digital Projection 1.39-1.87:1 / Lightning Lens	1
CHR DS+6K Christie Video Projector	1
CHR 104-115 101-01 Christie Digital 4.1-6.9:1 / HD Lens	1
Christie Digital 1.4-1.8:1 / HD Lens	1
9'x9' DA-LITE Fast Fold	1
14'x24.5' Rear Projector Screen	1
Supertitle Screen	1
Tripod Screen	2
Sharp X6-P25X Digital Projector	1

Versatile Aluminum Platforms

Wenger Versatile Platform Risers

Carpeted Grey Decks	With 8", 16", 24", 32", and 40" legs
3' x 3'	3
4' x 4'	4
3' x 8'	20
4' x 8'	20

Wenger Tourmaster 4-step Choral Risers

3 Step Units	3
--------------	---

Pipe and Drape

12' Uprights with Base	12
Crossbars	8
12' x 9' Black Drapes	29

Other

Hazers	2
Black Straight Back Padded Orchestra Chairs	276
Black Straight Back Padded Cello Chairs	20
Black Music Stands (single ledge)	287
Music Stand Lights	141
Conductor's Podium	2
Lectern – Wood	1
Lectern – Lexan	1
Lectern – Black	2

House Pianos

Steinway Model D9' Concert Grand, A=440	3
Boston 6' Baby Grand A=440	2
Upright Piano	5

Percussion

Pearl Concert Bass Drum	1
Yamaha Timpani set of Four	4
Tam Tam with stand	1
Vibraphone	1
Xylophone	1
Tubular Bells	1
Fall Creek Bell Set	1
Crash Symbols	1



Gregory Family Theater

TECHNICAL SPECIFICATIONS

The 240 seat Gregory Family Theater is a thrust style space that is easily re-configured for use in applications from theatre in the round to dance studio rehearsal space. The removable seats are on retractable bleacher style platforms which can be withdrawn to open a nearly 70'x70' space for an intimately lit dinner for up to 300 or any other function requiring a large open room.



Production & Facilities Manager

Chris Burrell
cburrell2@gmu.edu
703.993.7740

Operations Manager

Diane Burrell
dburrell5@gmu.edu
703.993.7742

Technical Director

Kevin Smith
ksmit6@gmu.edu
703.993.7743

Office Manager For Rental Information

Emily Smith
esmith68@gmu.edu
703.993.1234

Theater Seating

Theater	240 on risers / 260 with balcony
Seated Banquet	240 with dance floor / 300 tables only
Standing Reception	425
Classroom Style	250
Hollow Square	30
Expo Set Up	25 @ 6' tables
Empty Max Capacity	600

Gregory Dimensions

Minimum Stage:	68'-9" wide x 33'-7" deep (with bleachers open)
Maximum Stage:	68'-9" wide x 59'-5" deep (with bleachers closed)
Floor Construction:	Black, Yellow Pine (T&G) on plywood, on rubber pads on 2"x4" sleepers
Catwalk Height:	17'-0"
Playing Space:	52'-10" wide x 27'-0" deep
Balcony Overhang:	8' Deep x 8' High
	South side wall covered in 8' tall mirrors and drapery masking

BACKSTAGE SUPPORT

Dressing Rooms

The theater offers two small dressing rooms accommodating up to 6 and one large dressing room for up to 25. Each dressing room has makeup mirrors and costume/wardrobe racks, as well as toilets, showers, and sinks. One small dressing room on stage level, one small and one large up one flight of stairs

Wardrobe/Laundry

Wardrobe room available by advance arrangement only with washer and dryer, 2 irons, 3 ironing boards, 2 professional steamers, and a deep sink.



Drapery Inventory

Quantity	Item	Color	Fabric	Dimensions	Notes
1	Cyc	Cream/White		40' W x 20' - 8" H	Flat
1	Scrim	White		40' W x 20' - 8" H	Flat
1	Scrim	Black		40' W x 20' - 8" H	Flat
20	Legs	Black	Velour	8' W x 20' - 8" H	Flat

LIGHTING

Stage Electrical Circuit Schedule

Location	Available Circuits	Circuit Numbers
Catwalk 1	44 Circuits	1 – 44
Catwalk 2	44 Circuits	45 – 88
Catwalk 3	44 Circuits	89 – 132
Catwalk 4	44 Circuits	133 – 176
Catwalk 5	44 Circuits	177 – 220
Catwalk 6	22 Circuits	221 – 242
Catwalk SL	5 Circuits	243 – 247 (repeated at each perpendicular catwalk 1 – 6)
Catwalk SR	5 Circuits	248 – 252 (repeated at each perpendicular catwalk 1 – 6)
Deck Far USL	6 Circuits	253 – 258 plus 6 non-dims
Deck Far USR	6 Circuits	259 – 264 plus 6 non-dims
Deck Far DSL	6 Circuits	265 – 270 plus 6 non-dims
Deck Far DSR	6 Circuits	271 – 276 plus 6 non-dims



Lighting Inventory

ETC Source Four 14°	2
ETC Source Four 26°	8
ETC Source Four 36°	25
ETC Source Four 50°	32
Type SLJ Altman 6" Fresnels	8
S4 Par	118

SOUND

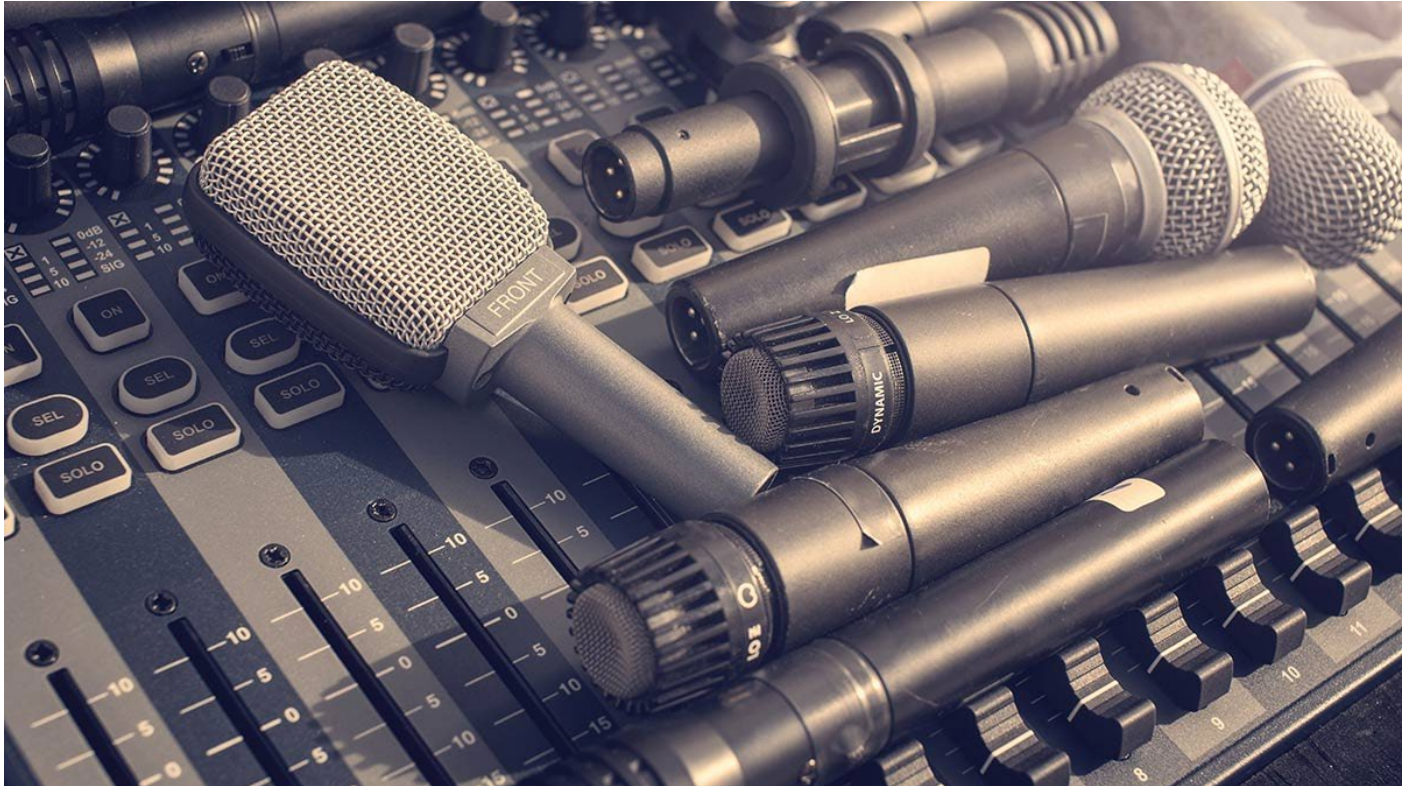
Main Audio

Console Allen & Heath AH-GL2400/24	1
24-Channel Dual Function Professional Live Sound Mixer	1
Tannoy Precision 6D Monitors	
<u>House PA</u>	
Meyer UPA 1Ps	2
Meyer M1D subs	2



Outboard Equipment

DBX Dual 15-Band Graphic Equalizer	1
Marantz PMD-570 Solid State Recorder	1
DBX Drive Rack 4800 System Processor	1
Audient Mic Preamp	1
AKG C45 1 B Mic Pair/Kit	1
2 channels of SHR ULXS124/85 microphones with SM58	
Handhelds and Countryman Lav and over ear	
microphones	
ProCo Stereo IRACK (IPOD Playback)	1
DN-C635 Dennon CD Player	1



HYLTON SUPPLEMENTAL EQUIPMENT

House Pianos

Steinway Model D9' Concert Grand, A=440	3
Boston 6' Baby Grand A=440	2
Upright Piano	5

Percussion

Pearl Concert Bass Drum	1
Yamaha Timpani set of Four	4
Tam Tam with stand	1
Vibraphone	1
Xylophone	1
Tubular Bells	1
Fall Creek Bell Set	1
Crash Symbols	1

Versatile Aluminum Platforms

Wenger Versatile Platform Risers

Carpeted Grey Decks	With 8", 16", 24", 32", and 40" legs
3' x 3'	3
4' x 4'	4
3' x 8'	20
4' x 8'	20

Wenger Tourmaster 4-step Choral Risers

3 Step Units	8
	3

Pipe and Drape

12' Uprights with Base	12
Crossbars	8
12' x 9' Black Drapes	29

Other

Hazers	2
Chairs, Black Straight Back Padded Orchestra	276
Chairs, Black Straight Back Padded Cello	20
Black Music Stands (single ledge)	287
Music Stand Lights	141
Conductor's Podium	2
Lectern – Wood	1
Lectern – Lexan	1
Lectern – Black	2
Large Round Tables (66" dia.)	45
Café tables (30" dia.)	24
Recs (6' x 30")	23
Skinny Recs / School House Tables (6' x 18")	14
Serps (serpentine 5' curve)	6
Chairs, Black Plastic Folding	360



Equipment is shared across multiple spaces. All items are subject to availability and use must be discussed with Production Team prior to Load in. Additional charges apply on some equipment and for piano tunings.

Didlake Grand Foyer



Capacities

Seated Banquet	100
Standing Reception	500
Expo Set Up	20 @ 6' tables



UVA Health Systems Rehearsal Room



Dimensions

30' x 37'

1110 sqft

Capacities

Seated Banquet	80
Standing Reception	125
Classroom Style	70
Hollow Square	24



Buchanan Partners Art Gallery



Dimensions

35' x 20'

700 sqft

Capacity

Seated Banquet

80

Standing Reception

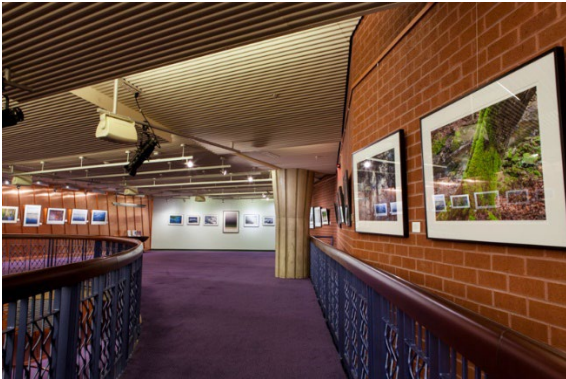
200

Classroom Style

100

Expo Set Up

10 @ 6' Recs



Jacquemin Family Foundation Hall



Dimensions

51' x 61'

3000 sqft

Capacities

Theater Style	145 on risers
Seated Banquet	240 (180 with Dance Floor)
Standing Reception	500
Classroom Style	200
Hollow Square	50

LIGHTING

Electronic Theatre Controls ION XE control console	1
Light Source 6" Fresnel Pendant Color Changing	24
House Light Series	
Elation Colour5 Profile ERS	13
Elation FuzeProfile	8

SOUND

ULX S Wireless Microphones	4
Mackie 4ch Audio Console	1
Meyer Speakers	



Ballard Postma Studio



Dimensions

39' x 44'

1700 sqft

Capacities

Theater Style	140
Seated Banquet	120 (80 with Dance Floor)
Standing Reception	245
Classroom Style	80
Hollow Square	24

LIGHTING

Electronic Theatre Controls ION XE control console
Light Source 6" Fresnel Pendant Color Changing
House Light Series

1
16

SOUND

ULX S Wireless Microphones
Mackie 4ch Audio Console
Meyer Speakers

4
1



Classrooms 1 & 2

CLASSROOM 1

Dimensions

20' x 27' 540 sqft

Capacities

Theater Style 45

Classroom Style 25

Equipment

Projector 1

White Board 1

Desks 12

Chairs 24



CLASSROOM 2

Dimensions

22' x 27' 594 sqft

Capacities

Theater Style 45

Classroom Style 25

Equipment

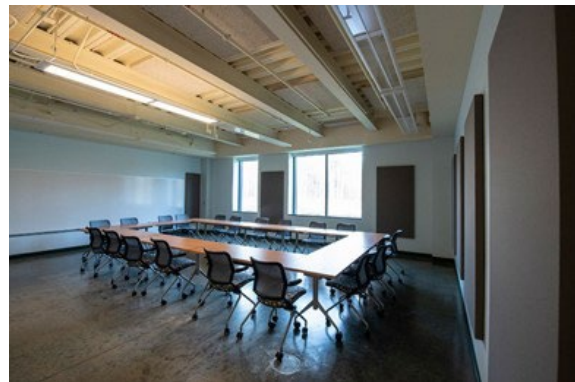
Projector 1

White Board 1

Webinar Camera & Microphones 1

Desks 12

Chairs 24



Practice Rooms

PRACTICE ROOMS A, B, E, AND F

Dimensions

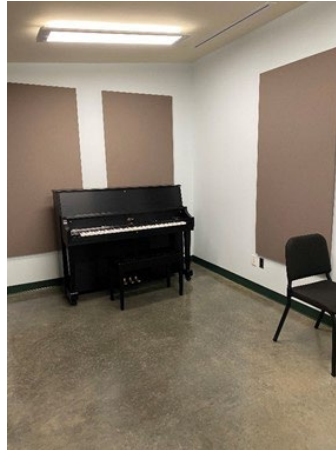
9' x 11' 100 sqft

Capacities

Maximum Capacity 2 – 4

Upright Piano 1

Chair/Bench 1



PRACTICE ROOMS C AND D

Dimensions

11' x 18' 200 sqft

Capacities

Maximum Capacity 4 – 8

Boston 6' Baby Grand A=440 1

Chair/Bench 1



Hylton Supplemental Equipment

House Pianos

Steinway Model D9' Concert Grand, A=440	3
Boston 6' Baby Grand A=440	2
Upright Piano	5

Percussion

Pearl Concert Bass Drum	1
Yamaha Timpani set of Four	4
Tam Tam with stand	1
Vibraphone	1
Xylophone	1
Tubular Bells	1
Fall Creek Bell Set	1
Crash Symbols	1



Versatile Aluminum Platforms

Wenger Versatile Platform Risers

Carpeted Grey Decks

3' x 3'	3
4' x 4'	4
3' x 8'	20
4' x 8'	20

Wenger Tourmaster 4-step Choral Risers

3 Step Units	8
	3

With 8", 16", 24", 32", and 40" legs

Pipe and Drape

12' Uprights with Base	12
Crossbars	8
12' x 9' Black Drapes	29

Other

Hazers	2
Chairs, Black Straight Back Padded Orchestra	276
Chairs, Black Straight Back Padded Cello	20
Black Music Stands (single ledge)	287
Music Stand Lights	141
Conductor's Podium	2
Lectern – Wood	1
Lectern – Lexan	1
Lectern – Black	2
Large Round Tables (66" dia.)	45
Café tables (30" dia.)	24
Recs (6' x 30")	23
Skinny Recs / School House Tables (6' x 18")	14
Serps (serpentine 5' curve)	6
Chairs, Black Plastic Folding	360

Equipment is shared across multiple spaces. All items are subject to availability and use must be discussed with Production Team prior to Load in. Additional charges apply on some equipment and for piano tunings.

Directions to Hylton Performing Arts Center

Loading Dock Facilities

Dock is located at the NW corner of the building. Three bays with dock leveler at first bay. Roll up doors to access either the scene shop or hallway.

Physical address:

Hylton Performing Arts Center
10960 George Mason Circle
Manassas, VA 20110
703.993.1234

Coordinates: 38°45'19"N 77°31'29"W.

FROM I-66 EXIT 44

- **Follow I-66 to VA-234 S/Prince William Pkwy. Take exit 44 from I-66 E**
- **Continue on VA-234 S/Prince William Pkwy to your destination in Innovation**
 - **9 min (4.6 mi)**
- **Continue onto VA-234 S/Prince William Pkwy**
 - **3.5 mi**
- **Turn right onto Discovery Blvd**
 - **0.3 mi**
- **Turn left onto University Blvd**
 - **0.5 mi**
- **Turn left onto Cannon Creek Ln**
 - **0.1 mi**

Hylton Performing Arts Center
10960 George Mason Cir,
Manassas, VA 20110

Hylton Space Quick Reference

URL to the rentals page of the website: <https://hyltoncenter.org/rentals>

Merchant Hall: 17,380 total sq. ft.

Jewel sized European Opera House style theater seating just over 1,100. Stage has limited availability to be rented by itself for events. Has theatrical lighting, sound and AV.

Stage: 5,355 sq. ft (105' x 51'), Proscenium – 49'-9" x 32'-10" House (seating area): 12,025 sq. ft., Fixed seating capacity (1100)

Stage Capacity for events:

- Seated Banquet – 400
- Standing Reception – 600
- Hollow Square – 50
- Classroom Style – 200

Gregory Family Theatre: 4,352 sq. ft. (64' x 68')

Black Box (flexible) theater space with New Orleans style balcony. Has theatrical lighting, sound and AV.

Capacity

- Theatre – 240 on risers (with balcony 300)
- Seated Banquet – 300 with dance floor space – 240
- Standing Reception – 425
- Classroom Style – 250
- Hollow Square – 30

Didlake Grand Foyer (First Floor Lobby): 7,310 sq. ft. (measured in rectangular sections)

Multi-leveled grand entrance to the Center with 2 story high window wall. (Availability is limited without rental of Merchant Hall.)

Capacity

- Seated Banquet – 160
- Standing Reception 500

UVA Health Systems Rehearsal Room: 1,110 sq. ft. (37' x 30')

Original rehearsal room with wood look floor.

Capacity

- Seated Banquet – 80
- Standing Reception – 125
- Classroom Style – 70
- Hollow Square – 24

Buchanan Partners Art Gallery (Didlake Foyer second Floor): 1,200 sq. ft. (25' x 48')

Open space overlooking lower level and two story window wall. Rotating art exhibits that cannot be removed.

Capacity

- Seated Banquet – 80
- Standing Reception – 200
- Classroom Style – 100

Jacquemin Family Foundation Hall (Education Wing): 3,463 sq.ft. (51'x 61')

Beautiful rectangular room with stunning wood wall at one end. Has theatrical lighting and sound.

Capacity

- Theater Style – 145 on risers
- Seated Banquet – 240 (180 with room for a dance floor)
- Standing Reception – 500
- Classroom Style – 200
- Hollow Square – 50

Ballard-Postma Studio (Education Wing): 1,706 sq. ft. (39' x 44')

Lovely room with floor to ceiling windows, purple velvet curtains and a mirrored wall. Excellent for small events or rehearsals.

Capacity

- Theater Style – 140
- Seated Banquet – 120 (80 with room for a dance floor)
- Standing Reception – 245
- Classroom Style – 80
- Hollow Square – 24

Classrooms A and B (Education Wing): 702 sq. ft. each (15' x 27')

Classrooms with tables, and projection smart boards.

Capacity

- Classroom Style – 25
- Hollow Square – 24

For more information, contact - Office Manager, Emily Smith, esmith68@gmu.edu 703-993-1234