

Hylton Center

**David Baylor**  
General Manager  
dbaylor@gmu.edu  
703.993.9504

**Adrienne Bryant Godwin**  
Director of Programming  
agodwin2@gmu.edu  
703.993.4337

**Mark Ormesher**  
Co-Interim Production Manager  
mormeshe@gmu.edu  
703.993.7117

Physical address:  
10960 George Mason Circle  
Manassas, VA 20110  
703.993.1234

**Stephen Winkler**  
Co-Interim Production Manager  
wstephe3@gmu.edu  
703.993.7980

For Rental Information:  
**Emily Smith**  
Office Manager  
esmith68@gmu.edu  
703.993.1234



Contents

Hylton Center ..... 1

Contacts ..... 2

Merchant Hall ..... 3

Gregory Family Theater ..... 13

Didlake Grand Foyer ..... 18

UVA Health Systems Rehearsal Room ..... 19

Buchanan Partners Art Gallery..... 20

Jacquemin Family Foundation Hall ..... 21

Ballard Postma Studio..... 22

Classrooms ..... 23

Practice Rooms..... 24

Hylton Supplemental Equipment..... 25

Directions to Hylton Performing Arts Center..... 26

Hylton Space Quick Reference ..... 27

Contacts



**Executive Director**

**Rick Davis**  
rdavi4@gmu.edu  
703.993.9657

**General Manager**

**David Baylor**  
dbaylor@gmu.edu  
703.993.9504

**Co-Interim Production  
Manager**

**Stephen Winkler**  
wstephe3@gmu.edu  
703.993.7980

**Co-Interim Production  
Manager**

**Mark Ormesher**  
mormeshe@gmu.edu  
703.993.7117

**Technical Director**

**Kevin Smith**  
ksmit6@gmu.edu  
703.993.7743

**Head Electrician**

**Stephen Winkler**  
wstephe3@gmu.edu  
703.993.7980

**Audio Engineer**

**Zach Duane**  
zduane@gmu.edu  
703.993.7156

**Video and Audio Head**

**Mark Ormesher**  
mormeshe@gmu.edu  
703.993.7117

**Front of House &  
Community Inclusion  
Manager**

**Victoria Unterberger**  
vunterbe@gmu.edu  
703.993.7154

**Box Office Manager**

**Box Office**  
hylton@gmu.edu  
703.993.7759

**Education Coordinator**

**Marit Majeske**  
mmajeske@gmu.edu  
703.993.7741

**Office Manager**

**Emily Smith**  
esmith68@gmu.edu  
703.993.1234

## Merchant Hall



### TECHNICAL SPECIFICATIONS

The 1100 seat concert hall is designed as an adaptable venue, able to serve many types of events. 484 orchestra level seats, 50 pit seats, 186 seats in the Parterre, 190 seats in the first balcony and 190 seats in the second balcony. Seating charts available for download online.

Merchant Hall comes equipped with state of the art lighting and sound systems, a large orchestra pit, and the ability to vary the acoustical character of the room for the needs of a given production.

An adjustable music shell may be deployed to enhance the acoustical presence of an orchestra, chorus, soloist, or chamber ensemble. For theatrical, dance, and other large-scale productions, the shell vanishes, opening up a large stage with ample wing space and a 75 line set single purchase counterweight fly system.

#### AUDITORIUM SEATING

##### Maximum Capacity:

|                         |             |
|-------------------------|-------------|
| <b>Total</b>            | <b>1100</b> |
| Orchestra               | 484         |
| Orchestra Pit           | 50          |
| Parterre                | 186         |
| 1 <sup>st</sup> Balcony | 190         |
| 2 <sup>nd</sup> Balcony | 190         |

#### STAGE SEATING

##### Maximum Capacity:

|                    |     |
|--------------------|-----|
| Seated Banquet     | 400 |
| Standing Reception | 600 |
| Hollow Square      | 50  |
| Classroom Style    | 200 |



## Merchant Hall Dimensions

### STAGE AND ORCHESTRA PIT

#### Stage:

|                                       |   |
|---------------------------------------|---|
| Proscenium:                           | 49'-9"W x 32'-10"H  |
| Apron:                                | 2'-2"   |
| Upstage Wall:                         | 45'-0"  |
| Floor Construction:                   | Black, Yellow Pine (T&G) on plywood, on rubber pads on 2"x4" sleepers |
| Dance Floor:                          | Harlequin Studio, black, 10 panels 58'x49'                            |
| Hard Opening:                         | 49'-9"W x 32'-10"H (at center)  |
| Proscenium line to back wall (depth): | 45'-0"  |
| Back wall to upstage crossover:       | 3'-0"   |
| Proscenium to apron edge:             | 2'-2"   |
| Proscenium arch to stage left wall:   | 26'-9"  |
| Proscenium arch to stage right wall:  | 23'-7"  |
| Grid Height:                          | 70'-0"  |
| Pipe Travel:                          | 65'-3"  |

|                |   |
|----------------|---|
| Orchestra Pit: | 48'-6"W x 12'-7" Deep at stage extension<br>1,650sf total at orchestra pit level<br>12'-0" below deck |
|----------------|---|

#### Other Dimensions:

|                                  |        |
|----------------------------------|--------|
| Centerline to Stage Wall Left:   | 52'-5" |
| Centerline to Stage Wall Right:  | 48'-4" |
| Wing Space Stage Left:           | 26'-0" |
| Wing Space Stage Right:          | 23'-0" |
| Orchestra Shell Depth:           | 45'-5" |
| Orchestra Shell Width Downstage: | 49'-9" |
| Orchestra Shell Width Midstage:  | 43'-0" |
| Orchestra Shell Width Upstage:   | 41'-0" |

## Backstage Support

Wardrobe room available by advance arrangement only with washer and dryer, 2 irons, 3 ironing boards, 2 professional steamers and a deep sink.

Green room has refrigerator, sink, and microwave

Green Room and all Dressing Rooms have 42" LCD for audio and video feed from the stage.

## Theater Dressing Rooms

Star dressing rooms have sinks, toilets, and showers Chorus dressing rooms share common facilities

|               |                                 |
|---------------|---------------------------------|
| 1-3 Person:   | (2) Star rooms at stage level   |
| 6-8 Person:   | (4) Chorus rooms at stage level |
| 12-16 Person: | (2) Chorus rooms at stage level |



## Rigging System

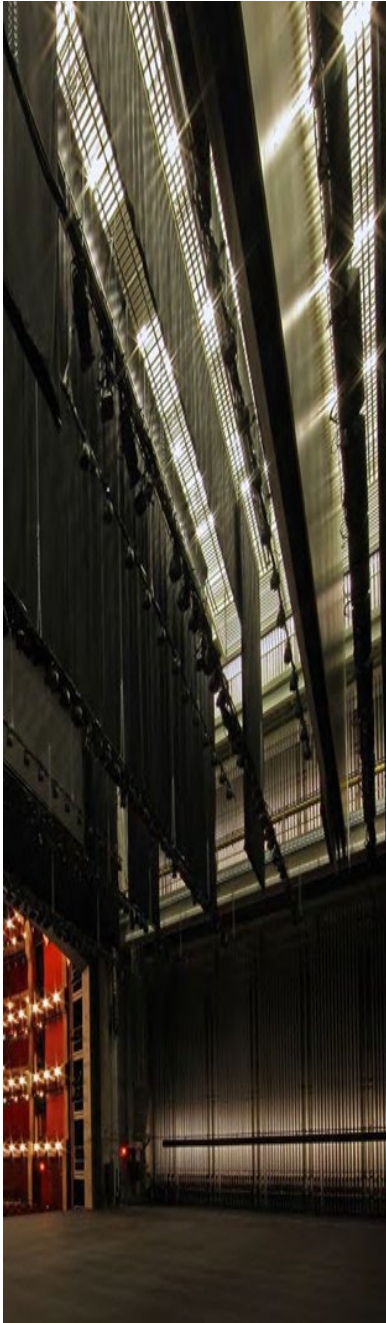
|                 |   |
|-----------------|---|
| Main Curtain:   | Counterweight – Guillotine only                 |
| Type/Speed:     | Manual  |
| Line Sets:      | 75 single purchase counterweight                |
| Capacity:       | 1,800 pounds                                    |
| Batten Lengths: | 66'-0"  |
| Batten Travel:  | 3'-6" Low Trim to 69'-0" High Trim              |
| Grid Access:    | Fully walkable with access via stairs or ladder |

## Drapery Inventory

| Quantity | Item        | Color | Fabric  | Dimensions       | Notes    |
|----------|-------------|-------|---------|------------------|----------|
| 16       | Legs        | Black | Velour  | 12' 2" W x 34' H | Flat     |
| 5        | Borders     | Black | Velour  | 66' W x 12' H    | Flat     |
| 1        | Scrim       | White |         | 66' W x 34' H    | Flat     |
| 1        | Scrim       | Black |         | 66' W x 34' H    | Flat     |
| 1        | Trans       | Cool  | Plastic | 66' W x 34' H    | Flat     |
| 1        | Act Curtain | Red   | Velour  | 66' W x 34' H    | Fullness |
| 4        | Blackout    | Black | Velour  | 66' W x 34' H    | Flat     |
| 1        | Bounce      | White | Plastic | 66' W x 34' H    | Flat     |



## Line Set Schedule



| Line Set | Distance |             | Use                       | Trim        |
|----------|----------|-------------|---------------------------|-------------|
| 1        | 1'-9"    |             | -----                     |             |
| 2        | 2'-3"    |             | Full Stage Black/Blackout |             |
| 3        | 2'-9"    |             | Legs                      | 44' Opening |
| 4        | 3'-3"    |             | -----                     |             |
| 5        | 3'-9"    |             | 1A Electric               |             |
| 6        | 4'-3"    |             | -----                     |             |
| 7        | 5'-3"    | CANNOT MOVE | Shell Ceiling             |             |
| 8        | 6'-3"    | CANNOT MOVE | 1st Electric              | 26'H trim   |
| 9        | 6'-9"    |             | -----                     |             |
| 10       | 7'-3"    |             | -----                     |             |
| 11       | 7'-9"    |             | -----                     |             |
| 12       | 8'-3"    |             | Moving LX 1               |             |
| 13       | 8'-9"    |             | -----                     |             |
| 14       | 9'-3"    |             | -----                     |             |
| 15       | 9'-9"    | CANNOT MOVE | Shell Electric            |             |
| 16       | 10'-3"   |             | Border                    |             |
| 17       | 10'-9"   |             | Legs                      |             |
| 18       | 11'-3"   |             | AV Masking Legs Alternate |             |
| 19       | 11'-9"   |             | AV Screen Alternate       |             |
| 20       | 12'-3"   |             | -----                     |             |
| 21       | 12'-9"   |             | -----                     |             |
| 22       | 13'-9"   | CANNOT MOVE | Shell Ceiling             |             |
| 23       | 14'-9"   |             | -----                     |             |
| 24       | 15'-3"   |             | 2nd Electric              | 26' H trim  |
| 25       | 15'-9"   |             | -----                     |             |
| 26       | 16'-3"   |             | -----                     |             |
| 27       | 16'-9"   |             | -----                     |             |
| 28       | 17'-3"   |             | Moving LX 2               |             |
| 29       | 17'-9"   |             | -----                     |             |
| 30       | 18'-3"   | CANNOT MOVE | Shell Electric            |             |
| 31       | 18'-9"   |             | -----                     |             |
| 32       | 19'-3"   |             | Mid-Stage FSB             |             |
| 33       | 19'-9"   |             | Legs                      |             |
| 34       | 20'-3"   |             | AV Masking Legs           | 22' opening |
| 35       | 20'-9"   |             | AV Screen                 |             |
| 36       | 21'-3"   | CANNOT MOVE | Mid-Stage Red             |             |
| 37       | 22'-3"   | CANNOT MOVE | Shell Ceiling             |             |
| 38       | 23'-3"   |             | -----                     |             |
| 39       | 23'-9"   |             | 3rd Electric              | 26'H Trim   |
| 40       | 24'-3"   |             | -----                     |             |
| 41       | 24'-9"   |             | -----                     |             |
| 42       | 25'-3"   |             | Moving LX 3               |             |
| 43       | 25'-9"   |             | -----                     |             |
| 44       | 26'-3"   |             | hanging mics              |             |
| 45       | 26'-9"   | CANNOT MOVE | Shell Electric            |             |
| 46       | 27'-3"   |             | Border/ FS B              |             |
| 47       | 27'-9"   |             | Legs                      |             |
| 48       | 28'-3"   |             | -----                     |             |
| 49       | 28'-9"   |             | -----                     |             |
| 50       | 29'-3"   |             | -----                     |             |
| 51       | 29'-9"   |             | -----                     |             |
| 52       | 30'-9"   | CANNOT MOVE | Shell Ceiling             |             |
| 53       | 31'-9"   |             | -----                     |             |
| 54       | 32'-3"   |             | -----                     |             |
| 55       | 32'-9"   |             | 4th Electric              | 26'H Trim   |
| 56       | 33'-3"   |             | -----                     |             |
| 57       | 33'-9"   |             | Moving LX 4               |             |
| 58       | 34'-3"   |             | -----                     |             |
| 59       | 34'-9"   |             | -----                     |             |
| 60       | 35'-3"   | CANNOT MOVE | Shell Electric            |             |
| 61       | 35'-9"   |             | Border / FSB              |             |
| 62       | 36'-3"   |             | Legs                      |             |
| 63       | 36'-9"   |             | -----                     |             |
| 64       | 37'-3"   |             | Trans                     |             |
| 65       | 37'-9"   |             | -----                     |             |
| 66       | 38'-3"   |             | Cyc Electric              |             |
| 67       | 39'-3"   | CANNOT MOVE | Shell Ceiling             |             |
| 68       | 40'-3"   |             | -----                     |             |
| 69       | 40'-9"   |             | Legs                      |             |
| 70       | 41'-3"   |             | -----                     |             |
| 71       | 41'-9"   |             | -----                     |             |
| 72       | 42'-3"   |             | -----                     |             |
| 73       | 42'-9"   |             | Bounce                    |             |



## ELECTRICAL AND ELECTRICS

Switches: 400A and 125A company switches are 3-phase and include FM Cam-lok's with double neutrals or tail connection lugs, breakers. Grounds and neutrals are reversed.

Theater: 1 USL - 400A, 120/208VAC

1 USR, 1 USL - 100A, 120/208VAC

## House Theatrical Lighting, Dimming, And Control



Dimming: (430) 20A dimmers

Control: ETC ION Classic

FOH: ETC Puck for back up

Tech Table: ETC Designer Puck

## Lighting Positions

2 Antitorm positions SL & SR at proscenium

2 center balcony rails

SL & SR balcony rails at top of balcony 1 and 2

5 Onstage Electrics

Tech Rail

## Stage Electrical Circuit Schedule

| Location          | 2.4KW Circuits            |
|-------------------|---------------------------|
| Technical Catwalk | 259-282,433-444           |
| Balcony 2         | 295-300, 319-324, 331-342 |
| Balcony 1         | 301-306, 325-330, 343-354 |
| Torm SL           | 283-294                   |
| Torm SR           | 307-318                   |
| Mid Rail SL       | 1-216, 403-414            |
| Mid Rail SR       | 223-234, 415-426, 445-456 |
| Stage Deck        | 355-402                   |
| Pit               | 427-432                   |



## Lighting Inventory



## ETC Ion Classic

**Instruments**

|                       |    |
|-----------------------|----|
| Source 4 PAR          | 96 |
| 10°                   | 20 |
| 14°                   | 10 |
| 19°                   | 42 |
| 26°                   | 46 |
| 36°                   | 70 |
| 50°                   | 24 |
| 70°                   | 2  |
| 6" Fresnels           | 14 |
| 8' PAR 56 Strips      | 9  |
| 6' L&E Mini Strips    | 8  |
| 4 Cell L&E Broad Cycs | 2  |
| PAR 64                | 42 |

**Booms**

|                                      |    |
|--------------------------------------|----|
| 10' Rolling Booms (box construction) | 10 |
| 5 units/boom                         |    |

**Accessories**

|                              |                 |
|------------------------------|-----------------|
| City Theatrical Drop-In Iris | 10              |
| Source Four Top Hat          | 72              |
| Source Four Half Hat         | 24              |
| Source Four PAR Barn Door    | 100             |
| A-size Pattern Holder        | 100             |
| Zetex Heat Guard             | 24"H x 12' L    |
|                              | Black Grommet 5 |
| TBE 18' Boom Pipe            | 12              |
| City Theatrical Boom Tie-off | 12              |
| Altman 50-lb. Base           | 12              |

**Spotlights**

|                               |   |
|-------------------------------|---|
| Robert Juliat – Aramis – 2.5K | 2 |
| Telrad Sight                  | 2 |

Equipment is shared across multiple spaces. All items are subject to availability and use must be discussed with Production Team prior to Load in. Additional charges apply on some equipment.



## SOUND

Equipment is shared across multiple spaces. All items are subject to availability and use must be discussed with Production Team prior to Load in. Additional charges apply on some equipment and for piano tunings.



### PA System

|                                      |    |
|--------------------------------------|----|
| D&B Q1 in Left/Right Line Array      | 20 |
| D&B Q10 in Left/Right Fill Positions | 2  |
| D&B B2 Subwoofers                    | 2  |

### Monitor Loud Speakers

|  |   |
|--|---|
| CMM M12 Community Passive Stage Monitors | 8 |
| EV Sx300 Passive Stage Monitors          | 4 |
| JBL Eon 515 Active Stage Monitors        | 6 |

### Console and Outboard Equipment

|                                      |   |
|--------------------------------------|---|
| Avid S6L                             | 1 |
| Denon CD/MP3 Players                 | 2 |
| Marantz PMD-570 Solid State Recorder | 1 |
| iRack MP3 Input Systems              | 1 |

### Mixer & Microphones

|   |    |
|---|----|
| Peavy 14 Channel with Shure ULXS                                  | 1  |
| Wireless Mics (Lavalier and Hand Held)                            |    |
| Shure ULX D Wireless Microphone (Lavalier and Hand Held)          | 4  |
| Portable Shure ULX D Wireless Microphone (Lavalier and Hand Held) | 8  |
| Shure Beta 58A  | 12 |
| Shure SM 58   | 4  |
| Shure SM57  | 6  |
| Shure Beta 87C  | 4  |
| Shure SM81  | 2  |
| Shure Beta 52A  | 1  |
| Shure KSM44   | 2  |
| AKG 451B  | 4  |
| AKG 214   | 4  |
| AKG 414   | 2  |
| Sennheiser MD421-11   | 2  |
| Sennheiser e604   | 3  |

## Amplifiers

|  |   |
|--|---|
| D&B D12 Amplifiers for PA System               | 7 |
| Crown Com-Tech 1200 (To drive 8 Monitor Mixes) | 4 |

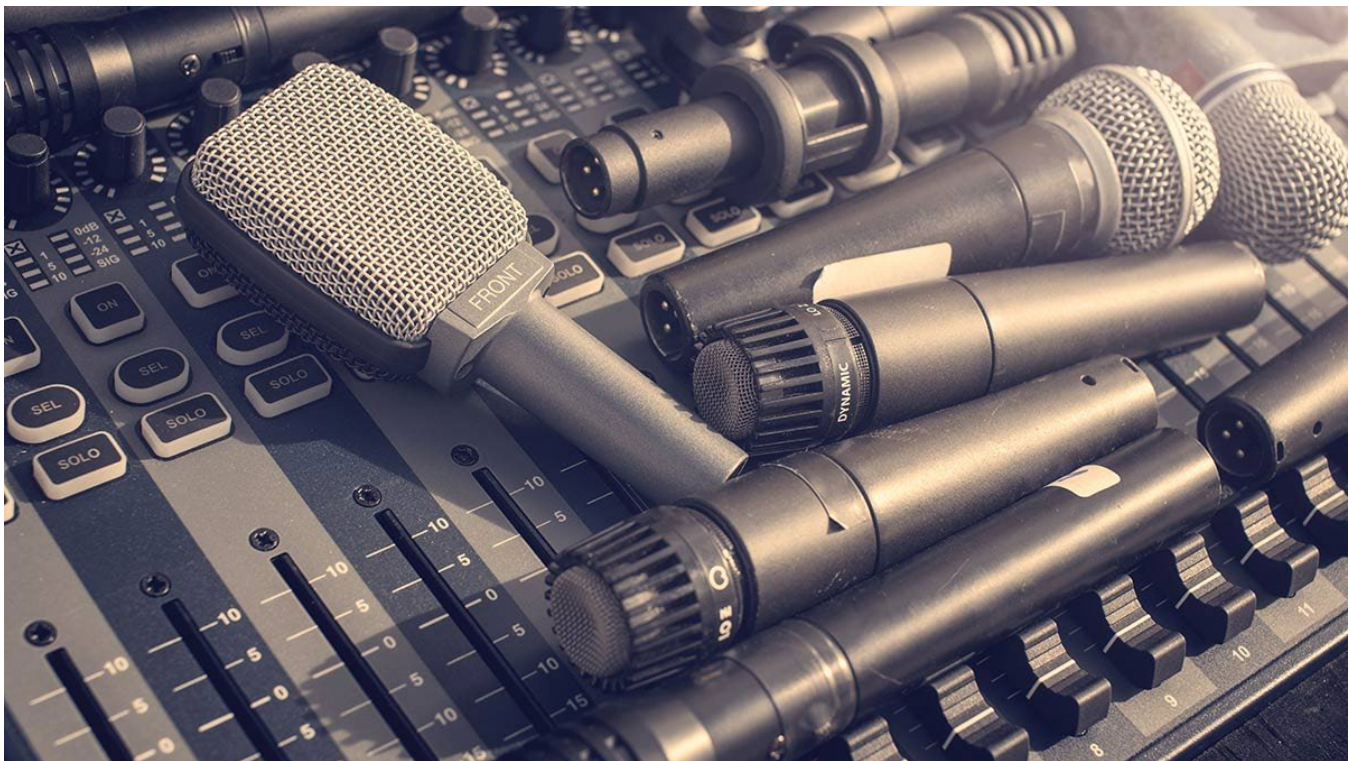
## Intercom

|  |    |
|--|----|
| ClearCom 4-channel Main Station                    | 1  |
| CLR CC-95 ClearCom Professional Single Ear Headset | 14 |
| TEL PH-88 Telex Single Muff Headset                | 6  |
| CLR CC-260 ClearCom Dual Muff Headset              | 4  |
| CLR CC-95 ClearCom Professional Single Ear Headset | 5  |



## Microphone Stands

|  |    |
|--|----|
| SND MS-12CD Atlas Sound FLOOR LOW-PRO STAND  | 10 |
| Round base mic stands                        | 4  |
| SND TEB-E Atlas Sound TRP MS 37-66 IN BM EXT | 16 |
| Tripod mic stands                            | 24 |
| SND PB-21XE Atlas Sound Mic Stand Boom Arm   | 8  |
| BS S AR-133 BS S Active Direct Box           | 4  |



## SUPPLEMENTAL EQUIPMENT

Equipment is shared across multiple spaces. All items are subject to availability and use must be discussed with Production Team prior to Load in. Additional charges apply on some equipment and for piano tunings.

### Livestreaming/Recording Video Equipment



|   |   |
|---|---|
| BMD ATEM Television Mixer                         | 1 |
| BMD HyperDeck - SSD Recorder                      | 1 |
| TeraDeck Streaming Video Encoder                  | 1 |
| Panasonic AW-UE150 PTZ Camera                     | 1 |
| Panasonic AW-UE60 PTZ Camera                      | 1 |
| Panasonic PTZ Remote Controller                   | 1 |
| Sony FS5 M2 camera, with 18-105mm lens and tripod | 2 |

### Video Distribution

|   |   |
|---|---|
| DGP 108-659 DGP Lighting 30-1080P Projector                 | 1 |
| DGP 105-610 Digital Projection 1.39-1.87:1 / Lightning Lens | 1 |
| CHR DS+6K Christie Video Projector                          | 1 |
| CHR 104-115 101-01 Christie Digital 4.1-6.9:1 / HD Lens     | 1 |
| Christie Digital 1.4-1.8:1 / HD Lens                        | 1 |
| 9'x9' DA-LITE Fast Fold                                     | 1 |
| 14'x24.5' Rear Projector Screen                             | 1 |
| Supertitle Screen   | 1 |
| Tripod Screen   | 2 |
| Sharp X6-P25X Digital Projector                             | 1 |



## Versatile Aluminum Platforms

### Wenger Versatile Platform Risers

|                     |                                      |
|---------------------|--------------------------------------|
| Carpeted Grey Decks | With 8", 16", 24", 32", and 40" legs |
| 3' x 3'             | 3                                    |
| 4' x 4'             | 4                                    |
| 3' x 8'             | 20                                   |
| 4' x 8'             | 20                                   |

### Wenger Tourmaster 4-step Choral Risers

|              |   |
|--------------|---|
| 3 Step Units | 3 |
|--------------|---|

## Pipe and Drape

|                        |    |
|------------------------|----|
| 12' Uprights with Base | 12 |
| Crossbars              | 8  |
| 12' x 9' Black Drapes  | 29 |

## Other

|   |     |
|---|-----|
| Hazers                                      | 2   |
| Black Straight Back Padded Orchestra Chairs | 276 |
| Black Straight Back Padded Cello Chairs     | 20  |
| Black Music Stands (single ledge)           | 287 |
| Music Stand Lights                          | 141 |
| Conductor's Podium                          | 2   |
| Lectern – Wood                              | 1   |
| Lectern – Lexan                             | 1   |
| Lectern – Black                             | 2   |

## House Pianos

|   |   |
|---|---|
| Steinway Model D9' Concert Grand, A=440 | 3 |
| Boston 6' Baby Grand A=440              | 2 |
| Upright Piano                           | 5 |

## Percussion

|                            |   |
|----------------------------|---|
| Pearl Concert Bass Drum    | 1 |
| Yamaha Timpani set of Four | 4 |
| Tam Tam with stand         | 1 |
| Vibraphone                 | 1 |
| Xylophone                  | 1 |
| Tubular Bells              | 1 |
| Fall Creek Bell Set        | 1 |
| Crash Symbols              | 1 |



## Gregory Family Theater

### TECHNICAL SPECIFICATIONS

The 240 seat Gregory Family Theater is a thrust style space that is easily re-configured for use in applications from theatre in the round to dance studio rehearsal space. The removable seats are on retractable bleacher style platforms which can be withdrawn to open a nearly 70'x70' space for an intimately lit dinner for up to 300 or any other function requiring a large open room.



#### Co-Interim Production Manager

**Mark Ormesher**  
mormeshe@gmu.edu  
703.993.7117

#### Co-Interim Production Manager

**Stephen Winkler**  
wstephe3@gmu.edu  
703.993.7980

#### Technical Director

**Kevin Smith**  
ksmit6@gmu.edu  
703.993.7743

#### Office Manager For Rental Information

**Emily Smith**  
esmith68@gmu.edu  
703.993.1234

### Theater Seating

|                    |  |
|--------------------|--|
| Theater            | 240 on risers / 260 with balcony       |
| Seated Banquet     | 240 with dance floor / 300 tables only |
| Standing Reception | 425                                    |
| Classroom Style    | 250                                    |
| Hollow Square      | 30                                     |
| Expo Set Up        | 25 @ 6' tables                         |
| Empty Max Capacity | 600                                    |

### Gregory Dimensions

|                     |   |
|---------------------|---|
| Minimum Stage:      | 68'-9" wide x 33'-7" deep (with bleachers open)                       |
| Maximum Stage:      | 68'-9" wide x 59'-5" deep (with bleachers closed)                     |
| Floor Construction: | Black, Yellow Pine (T&G) on plywood, on rubber pads on 2"x4" sleepers |
| Catwalk Height:     | 17'-0"  |
| Playing Space:      | 52'-10" wide x 27'-0" deep  |
| Balcony Overhang:   | 8' Deep x 8' High   |
|                     | South side wall covered in 8' tall mirrors and drapery masking        |

## BACKSTAGE SUPPORT

### Dressing Rooms

The theater offers two small dressing rooms accommodating up to 6 and one large dressing room for up to 25. Each dressing room has makeup mirrors and costume/wardrobe racks, as well as toilets, showers, and sinks. One small dressing room on stage level, one small and one large up one flight of stairs

### Wardrobe/Laundry

Wardrobe room available by advance arrangement only with washer and dryer, 2 irons, 3 ironing boards, 2 professional steamers, and a deep sink.



## Drapery Inventory

| Quantity | Item  | Color       | Fabric | Dimensions         | Notes |
|----------|-------|-------------|--------|--------------------|-------|
| 1        | Cyc   | Cream/White |        | 40' W x 20' - 8" H | Flat  |
| 1        | Scrim | White       |        | 40' W x 20' - 8" H | Flat  |
| 1        | Scrim | Black       |        | 40' W x 20' - 8" H | Flat  |
| 20       | Legs  | Black       | Velour | 8' W x 20' - 8" H  | Flat  |



## LIGHTING

### Stage Electrical Circuit Schedule

| Location     | Available Circuits | Circuit Numbers  |
|--------------|--------------------|--|
| Catwalk 1    | 44 Circuits        | 1 – 44   |
| Catwalk 2    | 44 Circuits        | 45 – 88  |
| Catwalk 3    | 44 Circuits        | 89 – 132   |
| Catwalk 4    | 44 Circuits        | 133 – 176  |
| Catwalk 5    | 44 Circuits        | 177 – 220  |
| Catwalk 6    | 22 Circuits        | 221 – 242  |
| Catwalk SL   | 5 Circuits         | 243 – 247 (repeated at each perpendicular catwalk 1 – 6) |
| Catwalk SR   | 5 Circuits         | 248 – 252 (repeated at each perpendicular catwalk 1 – 6) |
| Deck Far USL | 6 Circuits         | 253 – 258 plus 6 non-dims                                |
| Deck Far USR | 6 Circuits         | 259 – 264 plus 6 non-dims                                |
| Deck Far DSL | 6 Circuits         | 265 – 270 plus 6 non-dims                                |
| Deck Far DSR | 6 Circuits         | 271 – 276 plus 6 non-dims                                |



### Lighting Inventory

|                             |     |
|-----------------------------|-----|
| ETC Source Four 14°         | 2   |
| ETC Source Four 26°         | 8   |
| ETC Source Four 36°         | 25  |
| ETC Source Four 50°         | 32  |
| Type SLJ Altman 6" Fresnels | 8   |
| S4 Par                      | 118 |

## SOUND

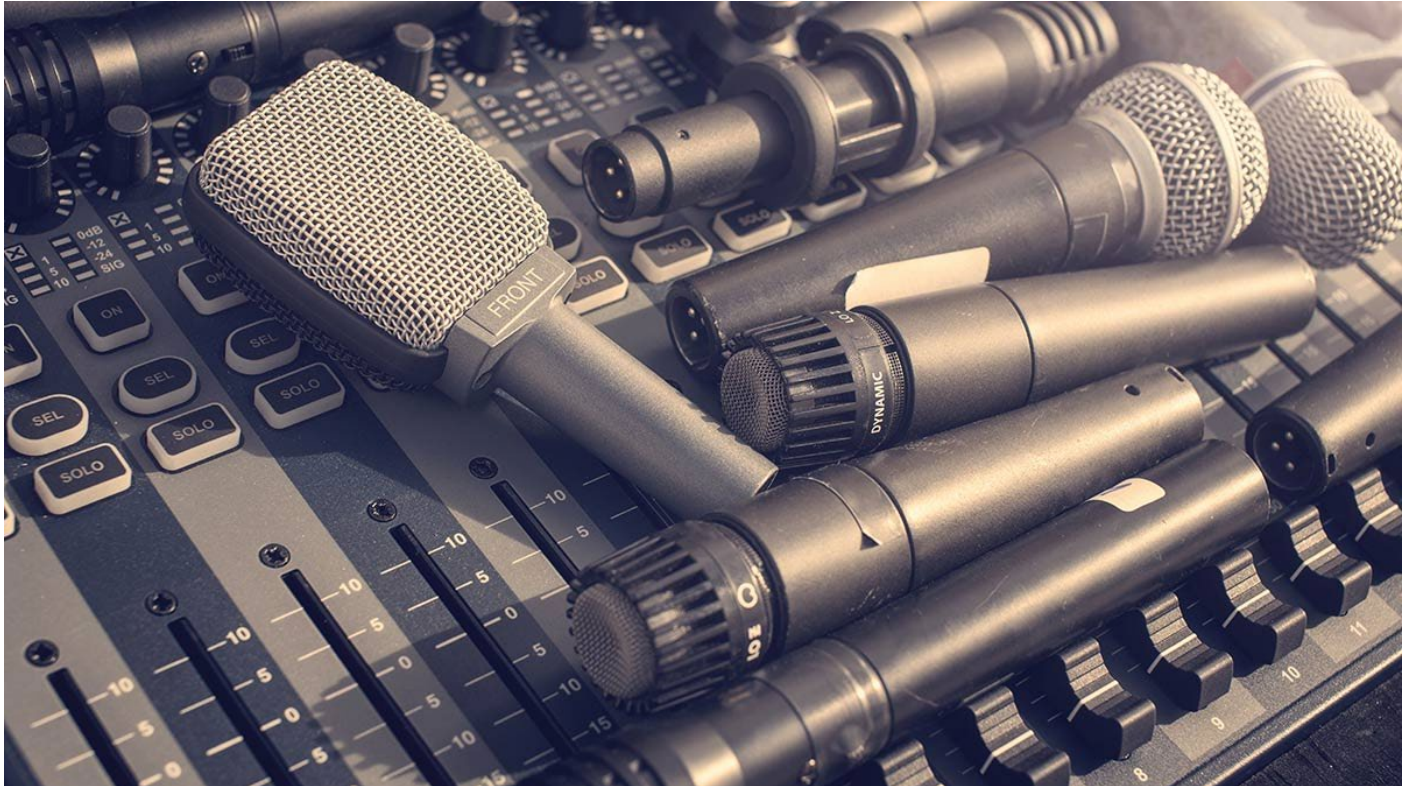
### Main Audio

|  |   |
|--|---|
| Console Allen & Heath AH-GL2400/24                     | 1 |
| 24-Channel Dual Function Professional Live Sound Mixer | 1 |
| Tannoy Precision 6D Monitors                           |   |
| <u>House PA</u>  |   |
| Meyer UPA 1Ps  | 2 |
| Meyer M1D subs   | 2 |



### Outboard Equipment

|  |   |
|--|---|
| DBX Dual 15-Band Graphic Equalizer                 | 1 |
| Marantz PMD-570 Solid State Recorder               | 1 |
| DBX Drive Rack 4800 System Processor               | 1 |
| Audient Mic Preamp                                 | 1 |
| AKG C45 1 B Mic Pair/Kit                           | 1 |
| 2 channels of SHR ULXS124/85 microphones with SM58 |   |
| Handhelds and Countryman Lav and over ear          |   |
| microphones  |   |
| ProCo Stereo IRACK (IPOD Playback)                 | 1 |
| DN-C635 Dennon CD Player                           | 1 |



## HYLTON SUPPLEMENTAL EQUIPMENT

### House Pianos

|   |   |
|---|---|
| Steinway Model D9' Concert Grand, A=440 | 3 |
| Boston 6' Baby Grand A=440              | 2 |
| Upright Piano                           | 5 |

### Percussion

|                            |   |
|----------------------------|---|
| Pearl Concert Bass Drum    | 1 |
| Yamaha Timpani set of Four | 4 |
| Tam Tam with stand         | 1 |
| Vibraphone                 | 1 |
| Xylophone                  | 1 |
| Tubular Bells              | 1 |
| Fall Creek Bell Set        | 1 |
| Crash Symbols              | 1 |

### Versatile Aluminum Platforms

#### Wenger Versatile Platform Risers

|                     |                                      |
|---------------------|--------------------------------------|
| Carpeted Grey Decks | With 8", 16", 24", 32", and 40" legs |
| 3' x 3'             | 3                                    |
| 4' x 4'             | 4                                    |
| 3' x 8'             | 20                                   |
| 4' x 8'             | 20                                   |

#### Wenger Tourmaster 4-step Choral Risers

|              |   |
|--------------|---|
| 3 Step Units | 8 |
|              | 3 |

### Pipe and Drape

|                        |    |
|------------------------|----|
| 12' Uprights with Base | 12 |
| Crossbars              | 8  |
| 12' x 9' Black Drapes  | 29 |

### Other

|  |     |
|--|-----|
| Hazers                                       | 2   |
| Chairs, Black Straight Back Padded Orchestra | 276 |
| Chairs, Black Straight Back Padded Cello     | 20  |
| Black Music Stands (single ledge)            | 287 |
| Music Stand Lights                           | 141 |
| Conductor's Podium                           | 2   |
| Lectern – Wood                               | 1   |
| Lectern – Lexan                              | 1   |
| Lectern – Black                              | 2   |
| Large Round Tables (66" dia.)                | 45  |
| Café tables (30" dia.)                       | 24  |
| Recs (6' x 30")                              | 23  |
| Skinny Recs / School House Tables (6' x 18") | 14  |
| Serps (serpentine 5' curve)                  | 6   |
| Chairs, Black Plastic Folding                | 360 |



Equipment is shared across multiple spaces. All items are subject to availability and use must be discussed with Production Team prior to Load in. Additional charges apply on some equipment and for piano tunings.



## Didlake Grand Foyer

**This is a shared space when there are performances in adjoining spaces.**



### Capacities

|                    |                |
|--------------------|----------------|
| Seated Banquet     | 100            |
| Standing Reception | 500            |
| Expo Set Up        | 20 @ 6' tables |



UVA Health Systems Rehearsal Room



Dimensions

30' x 37'

1110 sqft

Capacities

Seated Banquet

80

Standing Reception

125

Classroom Style

70

Hollow Square

24





Buchanan Partners Art Gallery



Dimensions

35' x 20'

700 sqft

Capacity

Seated Banquet

80

Standing Reception

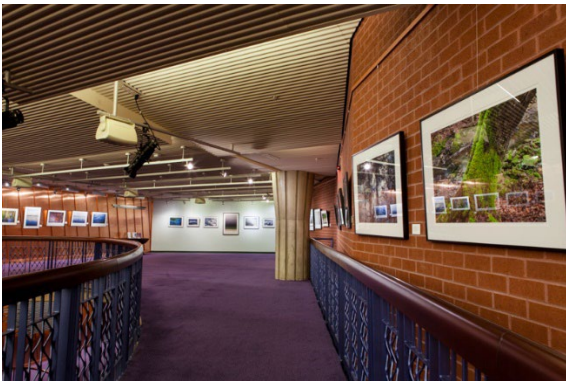
200

Classroom Style

100

Expo Set Up

10 @ 6' Recs





## Jacquemin Family Foundation Hall



### Dimensions

51' x 61'

3000 sqft

### Capacities

|                    |                            |
|--------------------|----------------------------|
| Theater Style      | 145 on risers              |
| Seated Banquet     | 240 (180 with Dance Floor) |
| Standing Reception | 500                        |
| Classroom Style    | 200                        |
| Hollow Square      | 50                         |

### LIGHTING

|  |    |
|--|----|
| Electronic Theatre Controls ION XE control console | 1  |
| Light Source 6" Fresnel Pendant Color Changing     | 24 |
| House Light Series                                 |    |
| Elation Colour5 Profile ERS                        | 13 |
| Elation FuzeProfile                                | 8  |

### SOUND

|                            |   |
|----------------------------|---|
| ULX S Wireless Microphones | 4 |
| Mackie 4ch Audio Console   | 1 |
| Meyer Speakers             |   |



## Ballard Postma Studio



### Dimensions

39' x 44'

1700 sqft

### Capacities

|                    |                           |
|--------------------|---------------------------|
| Theater Style      | 140                       |
| Seated Banquet     | 120 (80 with Dance Floor) |
| Standing Reception | 245                       |
| Classroom Style    | 80                        |
| Hollow Square      | 24                        |

### LIGHTING

Electronic Theatre Controls ION XE control console  
Light Source 6" Fresnel Pendant Color Changing  
House Light Series

1  
16

### SOUND

ULX S Wireless Microphones  
Mackie 4ch Audio Console  
Meyer Speakers

4  
1



## Classrooms

### CLASSROOM 1 – KOKO H. BEETLE CLASSROOM

#### Dimensions

20' x 27' 540 sqft

#### Capacities

Theater Style 45

Classroom Style 20

Board Room Style 20

#### Equipment

Projector 1

White Board 1

Desks 10

Chairs 20



### CLASSROOM 2 – NOT YET NAMED

#### Dimensions

22' x 27' 594 sqft

#### Capacities

Theater Style 45

Classroom Style 20

Boardroom Style 20

#### Equipment

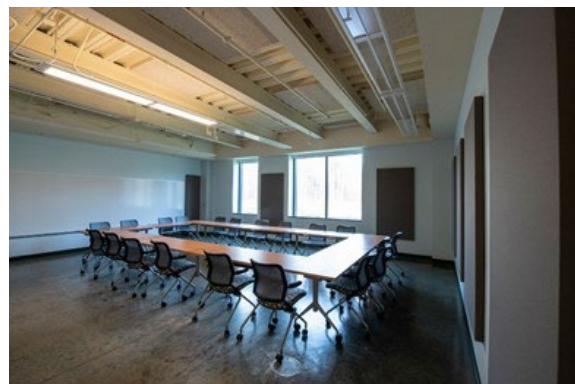
Projector 1

White Board 1

Webinar Camera & Microphones 1

Desks 10

Chairs 20





## Practice Rooms

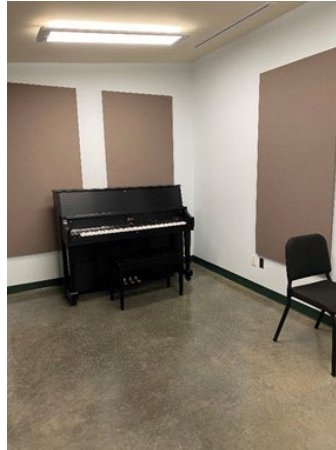
### PRACTICE ROOMS A, B, E, AND F

#### Dimensions

9' x 11' 100 sqft

#### Capacities

|                  |       |
|------------------|-------|
| Maximum Capacity | 2 – 4 |
| Upright Piano    | 1     |
| Chair/Bench      | 1     |



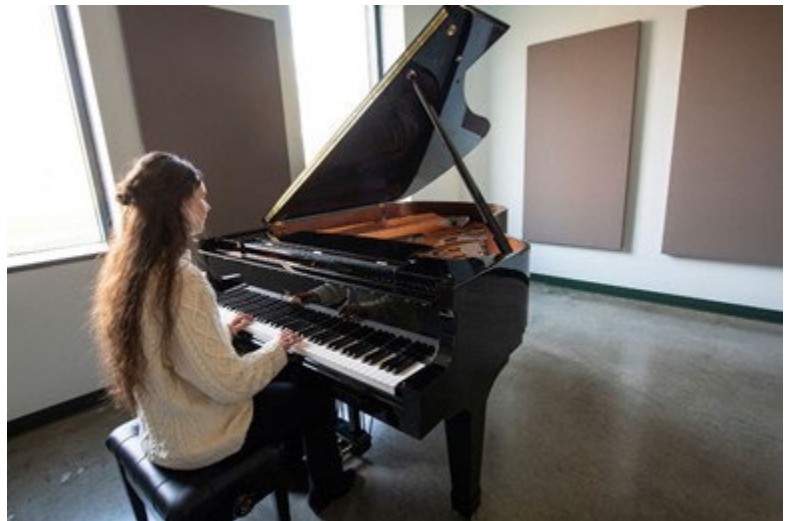
### PRACTICE ROOMS C AND D

#### Dimensions

11' x 18' 200 sqft

#### Capacities

|                            |       |
|----------------------------|-------|
| Maximum Capacity           | 4 – 8 |
| Boston 6' Baby Grand A=440 | 1     |
| Chair/Bench                | 1     |



Practice Room A – Parr Family Practice Studio

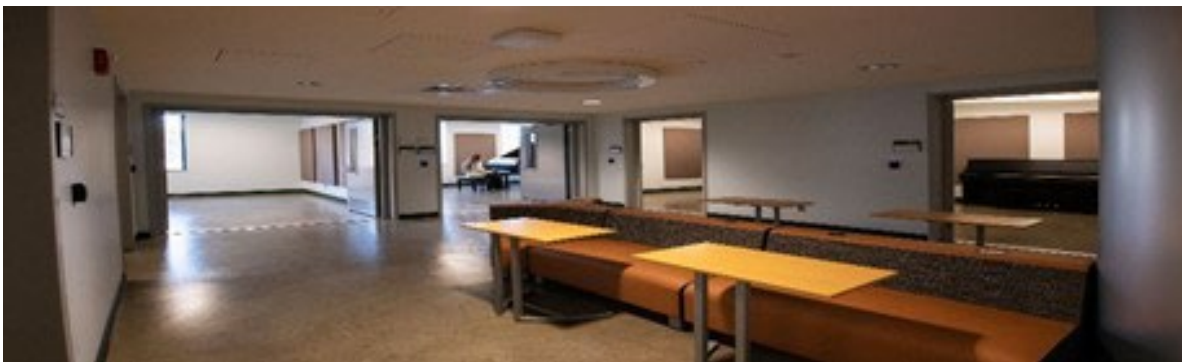
Practice Room B – Koko H. Beetle Practice Studio

Practice Room C – Micron Practice Room

Practice Room D – Donald E. Coulter and Rosemary T. Enright Practice Room

Practice Room E – James L. and Barbara W. White Practice Studio

Practice Room F – Shirley B. Rice Practice Studio



## Hylton Supplemental Equipment

### House Pianos

|   |   |
|---|---|
| Steinway Model D9' Concert Grand, A=440 | 3 |
| Boston 6' Baby Grand A=440              | 2 |
| Upright Piano                           | 5 |

### Percussion

|                            |   |
|----------------------------|---|
| Pearl Concert Bass Drum    | 1 |
| Yamaha Timpani set of Four | 4 |
| Tam Tam with stand         | 1 |
| Vibraphone                 | 1 |
| Xylophone                  | 1 |
| Tubular Bells              | 1 |
| Fall Creek Bell Set        | 1 |
| Crash Symbols              | 1 |

### Versatile Aluminum Platforms

#### Wenger Versatile Platform Risers

|   |                                      |
|---|--------------------------------------|
| Carpeted Grey Decks                           | With 8", 16", 24", 32", and 40" legs |
| 3' x 3'                                       | 3                                    |
| 4' x 4'                                       | 4                                    |
| 3' x 8'                                       | 20                                   |
| 4' x 8'                                       | 20                                   |
| <u>Wenger Tourmaster 4-step Choral Risers</u> | 8                                    |
| <u>3 Step Units</u>                           | 3                                    |

### Pipe and Drape

|                        |    |
|------------------------|----|
| 12' Uprights with Base | 12 |
| Crossbars              | 8  |
| 12' x 9' Black Drapes  | 29 |

### Other

|  |     |
|--|-----|
| Hazers                                       | 2   |
| Chairs, Black Straight Back Padded Orchestra | 276 |
| Chairs, Black Straight Back Padded Cello     | 20  |
| Black Music Stands (single ledge)            | 287 |
| Music Stand Lights                           | 141 |
| Conductor's Podium                           | 2   |
| Lectern – Wood                               | 1   |
| Lectern – Lexan                              | 1   |
| Lectern – Black                              | 2   |
| Large Round Tables (66" dia.)                | 45  |
| Café tables (30" dia.)                       | 24  |
| Recs (6' x 30")                              | 23  |
| Skinny Recs / School House Tables (6' x 18") | 14  |
| Serps (serpentine 5' curve)                  | 6   |
| Chairs, Black Plastic Folding                | 360 |



Equipment is shared across multiple spaces. All items are subject to availability and use must be discussed with Production Team prior to Load in. Additional charges apply on some equipment and for piano tunings.

## Directions to Hylton Performing Arts Center

### Loading Dock Facilities

Dock is located at the NW corner of the building. Three bays with dock leveler at first bay. Roll up doors to access either the scene shop or hallway.

Physical address:

Hylton Performing Arts Center  
10960 George Mason Circle  
Manassas, VA 20110  
703.993.1234

Coordinates: 38°45'19"N 77°31'29"W.

### FROM I-66 EXIT 44

- **Follow I-66 to VA-234 S/Prince William Pkwy. Take exit 44 from I-66 E**
- **Continue on VA-234 S/Prince William Pkwy to your destination in Innovation**
  - **9 min (4.6 mi)**
- **Continue onto VA-234 S/Prince William Pkwy**
  - **3.5 mi**
- **Turn right onto Discovery Blvd**
  - **0.3 mi**
- **Turn left onto University Blvd**
  - **0.5 mi**
- **Turn left onto Cannon Creek Ln**
  - **0.1 mi**

Hylton Performing Arts Center  
10960 George Mason Cir,  
Manassas, VA 20110



## Hylton Space Quick Reference

URL to the rentals page of the website: <https://hyltoncenter.org/rentals>

**Merchant Hall:** 17,380 total sq. ft.

*Jewel sized European Opera House style theater seating just over 1,100. Stage has limited availability to be rented by itself for events. Has theatrical lighting, sound and AV.*

Stage: 5,355 sq. ft (105' x 51'), Proscenium – 49'-9" x 32'-10" House (seating area): 12,025 sq. ft., Fixed seating capacity (1100)

Stage Capacity for events:

- Hollow Square – 50
- Classroom Style – 200

**Gregory Family Theatre:** 4,352 sq. ft. (64' x 68')

*Black Box (flexible) theater space with New Orleans style balcony. Has theatrical lighting, sound and AV.*

Capacity

- Theatre – 240 on risers (with balcony 300)
- Seated Banquet – 300 with dance floor space – 240
- Standing Reception – 425
- Classroom Style – 250
- Hollow Square – 30

**Didlake Grand Foyer (First Floor Lobby):** 7,310 sq. ft. (measured in rectangular sections)

*Multi-leveled grand entrance to the Center with 2 story high window wall. (Availability is limited without rental of Merchant Hall.)*

Capacity

- Seated Banquet – 160
- Standing Reception 500

**UVA Health Systems Rehearsal Room:** 1,110 sq. ft. (37' x 30')

*Original rehearsal room with wood look floor.*

Capacity

- Seated Banquet – 80
- Standing Reception – 125
- Classroom Style – 70
- Hollow Square – 24

**Buchanan Partners Art Gallery (Didlake Foyer second Floor):** 1,200 sq. ft. (25' x 48')

*Open space overlooking lower level and two story window wall. Rotating art exhibits that cannot be removed.*

**Capacity**

- Seated Banquet – 80
- Standing Reception – 200
- Classroom Style – 100

**Jacquemin Family Foundation Hall (Education Wing):** 3,463 sq.ft. (51'x 61')

*Beautiful rectangular room with stunning wood wall at one end. Has theatrical lighting and sound.*

**Capacity**

- Theater Style – 145 on risers
- Seated Banquet – 240 (180 with room for a dance floor)
- Standing Reception – 500
- Classroom Style – 200
- Hollow Square – 50

**Ballard-Postma Studio (Education Wing):** 1,706 sq. ft. (39' x 44')

*Lovely room with floor to ceiling windows, purple velvet curtains and a mirrored wall. Excellent for small events or rehearsals.*

**Capacity**

- Theater Style – 140
- Seated Banquet – 120 (80 with room for a dance floor)
- Standing Reception – 245
- Classroom Style – 80
- Hollow Square – 24

**Koko H. Beetle Classroom and Classroom 2 (Education Wing):** 702 sq. ft. each (15' x 27')

*Classrooms with tables, and projection smart boards.*

**Capacity**

- Classroom Style – 20
- Hollow Square – 20
- Theater Style – 45

For more information, contact - Office Manager, Emily Smith, [esmith68@gmu.edu](mailto:esmith68@gmu.edu) 703-993-1234