

Hylton Center

David Baylor
General Manager
dbaylor@gmu.edu
703.993.9504

Adrienne Bryant Godwin
Director of Programming
agodwin2@gmu.edu
703.993.4337

Mark Ormesher
Co-Interim Production Manager
mormeshe@gmu.edu
703.993.7117

Physical address:
10960 George Mason Circle
Manassas, VA 20110
703.993.1234

Stephen Winkler
Co-Interim Production Manager
wstephe3@gmu.edu
703.993.7980

For Rental Information:
Emily Smith
Office Manager
esmith68@gmu.edu
703.993.1234



Contents

Hylton Center 1

Contacts 2

Practice Rooms..... 3

Hylton Supplemental Equipment..... 4

Directions to Hylton Performing Arts Center..... 5

Hylton Space Quick Reference 6

Contacts



Executive Director

Rick Davis
rdavi4@gmu.edu
703.993.9657

General Manager

David Baylor
dbaylor@gmu.edu
703.993.9504

**Co-Interim Production
Manager**

Stephen Winkler
wstephe3@gmu.edu
703.993.7980

**Co-Interim Production
Manager**

Mark Ormesher
mormeshe@gmu.edu
703.993.7117

Technical Director

Kevin Smith
ksmit6@gmu.edu
703.993.7743

Head Electrician

Stephen Winkler
wstephe3@gmu.edu
703.993.7980

Audio Engineer

Zach Duane
zduane@gmu.edu
703.993.7156

Video and Audio Head

Mark Ormesher
mormeshe@gmu.edu
703.993.7117

**Front of House &
Community Inclusion
Manager**

Victoria Unterberger
vunterbe@gmu.edu
703.993.7154

Box Office Manager

Box Office
hylton@gmu.edu
703.993.7759

Education Coordinator

Marit Majeske
mmajeske@gmu.edu
703.993.7741

Office Manager

Emily Smith
esmith68@gmu.edu
703.993.1234

Practice Rooms

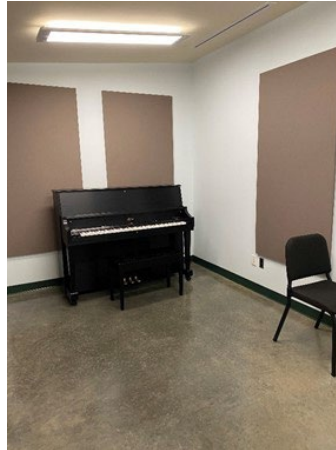
PRACTICE ROOMS A, B, E, AND F

Dimensions

9' x 11' 100 sqft

Capacities

Maximum Capacity	2 – 4
Upright Piano	1
Chair/Bench	1



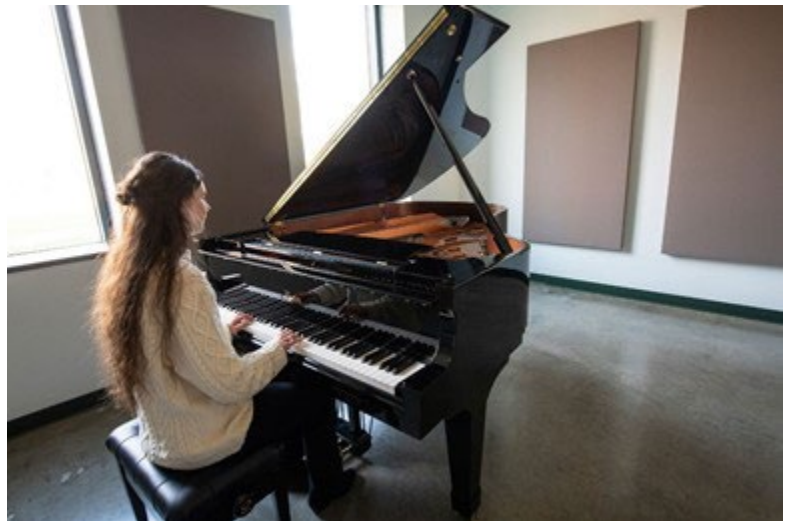
PRACTICE ROOMS C AND D

Dimensions

11' x 18' 200 sqft

Capacities

Maximum Capacity	4 – 8
Boston 6' Baby Grand A=440	1
Chair/Bench	1



Practice Room A – Parr Family Practice Studio

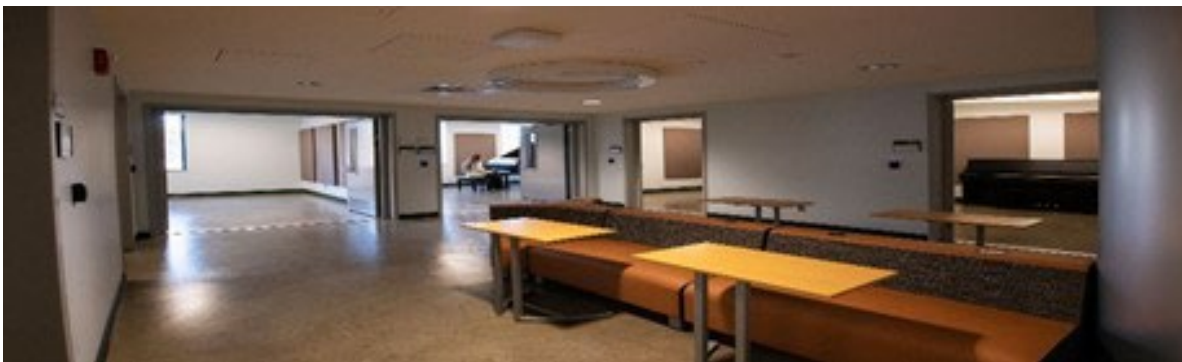
Practice Room B – Koko H. Beetle Practice Studio

Practice Room C – Micron Practice Room

Practice Room D – Donald E. Coulter and Rosemary T. Enright Practice Room

Practice Room E – James L. and Barbara W. White Practice Studio

Practice Room F – Shirley B. Rice Practice Studio



Hylton Supplemental Equipment

House Pianos

Steinway Model D9' Concert Grand, A=440	3
Boston 6' Baby Grand A=440	2
Upright Piano	5

Percussion

Pearl Concert Bass Drum	1
Yamaha Timpani set of Four	4
Tam Tam with stand	1
Vibraphone	1
Xylophone	1
Tubular Bells	1
Fall Creek Bell Set	1
Crash Symbols	1



Versatile Aluminum Platforms

Wenger Versatile Platform Risers

Carpeted Grey Decks

3' x 3'	3
4' x 4'	4
3' x 8'	20
4' x 8'	20

Wenger Tourmaster 4-step Choral Risers

3 Step Units	3
--------------	---

With 8", 16", 24", 32", and 40" legs

Pipe and Drape

12' Uprights with Base	12
Crossbars	8
12' x 9' Black Drapes	29

Other

Hazers	2
Chairs, Black Straight Back Padded Orchestra	276
Chairs, Black Straight Back Padded Cello	20
Black Music Stands (single ledge)	287
Music Stand Lights	141
Conductor's Podium	2
Lectern – Wood	1
Lectern – Lexan	1
Lectern – Black	2
Large Round Tables (66" dia.)	45
Café tables (30" dia.)	24
Recs (6' x 30")	23
Skinny Recs / School House Tables (6' x 18")	14
Serps (serpentine 5' curve)	6
Chairs, Black Plastic Folding	360

Equipment is shared across multiple spaces. All items are subject to availability and use must be discussed with Production Team prior to Load in. Additional charges apply on some equipment and for piano tunings.

Directions to Hylton Performing Arts Center

Loading Dock Facilities

Dock is located at the NW corner of the building. Three bays with dock leveler at first bay. Roll up doors to access either the scene shop or hallway.

Physical address:

Hylton Performing Arts Center
10960 George Mason Circle
Manassas, VA 20110
703.993.1234

Coordinates: 38°45'19"N 77°31'29"W.

FROM I-66 EXIT 44

- **Follow I-66 to VA-234 S/Prince William Pkwy. Take exit 44 from I-66 E**
- **Continue on VA-234 S/Prince William Pkwy to your destination in Innovation**
 - **9 min (4.6 mi)**
- **Continue onto VA-234 S/Prince William Pkwy**
 - **3.5 mi**
- **Turn right onto Discovery Blvd**
 - **0.3 mi**
- **Turn left onto University Blvd**
 - **0.5 mi**
- **Turn left onto Cannon Creek Ln**
 - **0.1 mi**

Hylton Performing Arts Center
10960 George Mason Cir,
Manassas, VA 20110

Hylton Space Quick Reference

URL to the rentals page of the website: <https://hyltoncenter.org/rentals>

Merchant Hall: 17,380 total sq. ft.

Jewel sized European Opera House style theater seating just over 1,100. Stage has limited availability to be rented by itself for events. Has theatrical lighting, sound and AV.

Stage: 5,355 sq. ft (105' x 51'), Proscenium – 49'-9" x 32'-10" House (seating area): 12,025 sq. ft., Fixed seating capacity (1100)

Stage Capacity for events:

- Hollow Square – 50
- Classroom Style – 200

Gregory Family Theatre: 4,352 sq. ft. (64' x 68')

Black Box (flexible) theater space with New Orleans style balcony. Has theatrical lighting, sound and AV.

Capacity

- Theatre – 240 on risers (with balcony 300)
- Seated Banquet – 300 with dance floor space – 240
- Standing Reception – 425
- Classroom Style – 250
- Hollow Square – 30

Didlake Grand Foyer (First Floor Lobby): 7,310 sq. ft. (measured in rectangular sections)

Multi-leveled grand entrance to the Center with 2 story high window wall. (Availability is limited without rental of Merchant Hall.)

Capacity

- Seated Banquet – 160
- Standing Reception 500

UVA Health Systems Rehearsal Room: 1,110 sq. ft. (37' x 30')

Original rehearsal room with wood look floor.

Capacity

- Seated Banquet – 80
- Standing Reception – 125
- Classroom Style – 70
- Hollow Square – 24

Buchanan Partners Art Gallery (Didlake Foyer second Floor): 1,200 sq. ft. (25' x 48')

Open space overlooking lower level and two story window wall. Rotating art exhibits that cannot be removed.

Capacity

- Seated Banquet – 80
- Standing Reception – 200
- Classroom Style – 100

Jacquemin Family Foundation Hall (Education Wing): 3,463 sq.ft. (51'x 61')

Beautiful rectangular room with stunning wood wall at one end. Has theatrical lighting and sound.

Capacity

- Theater Style – 145 on risers
- Seated Banquet – 240 (180 with room for a dance floor)
- Standing Reception – 500
- Classroom Style – 200
- Hollow Square – 50

Ballard-Postma Studio (Education Wing): 1,706 sq. ft. (39' x 44')

Lovely room with floor to ceiling windows, purple velvet curtains and a mirrored wall. Excellent for small events or rehearsals.

Capacity

- Theater Style – 140
- Seated Banquet – 120 (80 with room for a dance floor)
- Standing Reception – 245
- Classroom Style – 80
- Hollow Square – 24

Koko H. Beetle Classroom and Classroom 2 (Education Wing): 702 sq. ft. each (15' x 27')

Classrooms with tables, and projection smart boards.

Capacity

- Classroom Style – 20
- Hollow Square – 20
- Theater Style – 45

For more information, contact - Office Manager, Emily Smith, esmith68@gmu.edu 703-993-1234